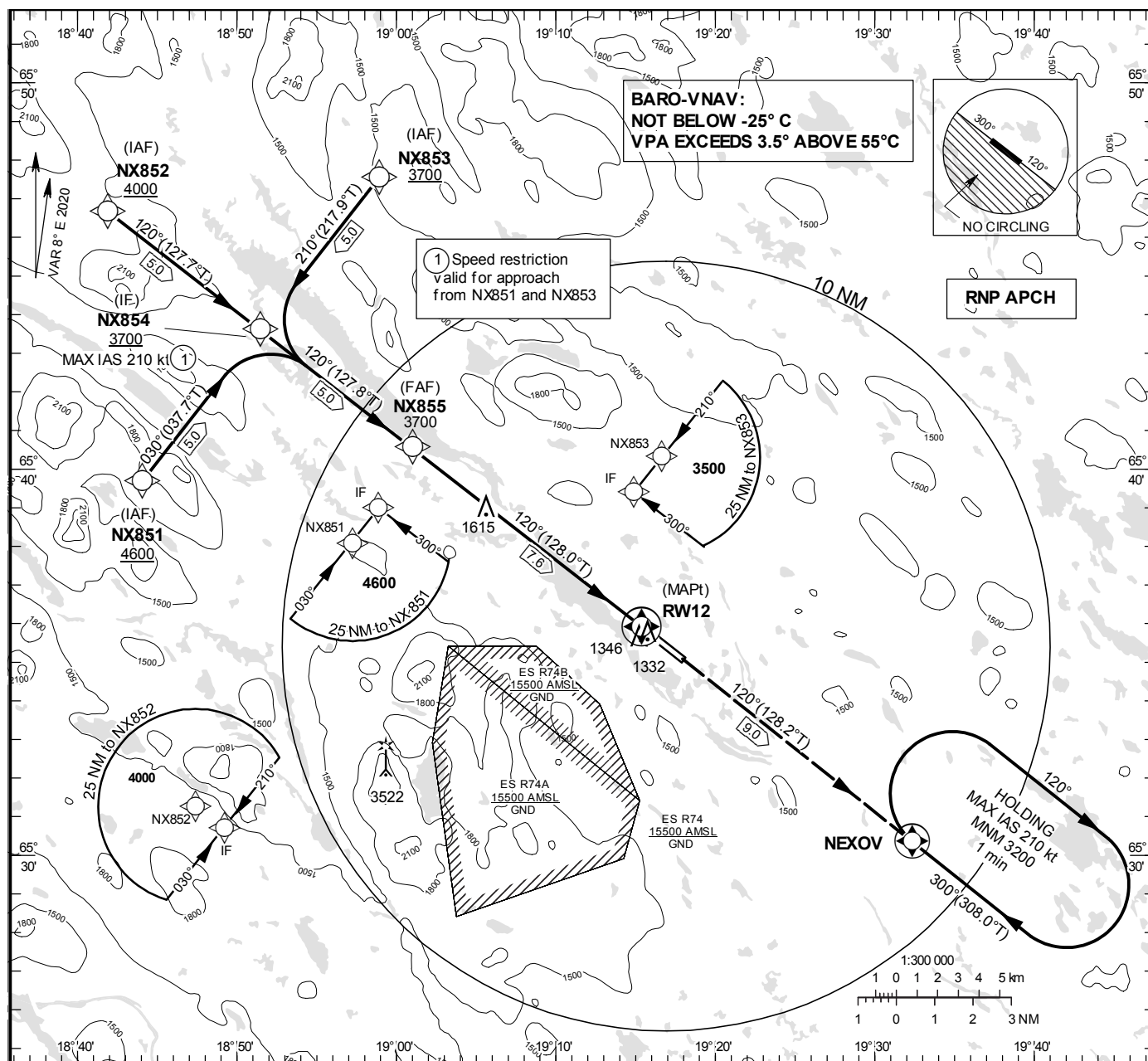


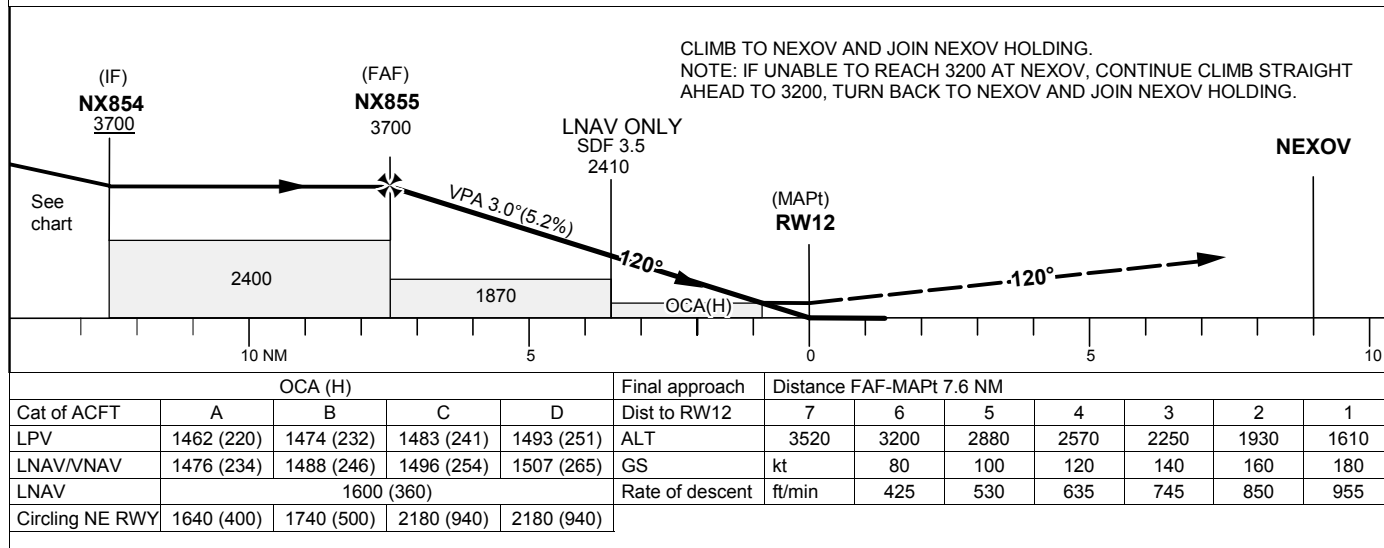
INSTRUMENT  
APPROACH  
CHART – ICAOTHR ELEV 1242.0 ft, AD ELEV 1245 ft  
OCH are related to THR.  
BRG are MAG (True).  
ALT, HGT and ELEV in ft.ARVIDSJAUR  
TOWER/INFORMATION

122.730



TA 5000 ft AMSL

RDH 50 ft



CHANGE: Editorial

## ARVIDSJAUR

## RNP RWY 12 via NX851

Path Desc	Waypoint Identifier	Fly-over	Course °M(°T)	Dist (NM)	Turn Dir	Altitude	Speed	VPA/RDH	Rec Navaid	Navigation Specification
IF	NX851	-	-	-	-	+4600	-	-	-	RNP APCH
TF	NX854	-	030°(037.7°)	5.0	-	+3700	-210	-	-	RNP APCH

## RNP RWY 12 via NX852

Path Desc	Waypoint Identifier	Fly-over	Course °M(°T)	Dist (NM)	Turn Dir	Altitude	Speed	VPA/RDH	Rec Navaid	Navigation Specification
IF	NX852	-	-	-	-	+4000	-	-	-	RNP APCH
TF	NX854	-	120°(127.7°)	5.0	-	+3700	-	-	-	RNP APCH

## RNP RWY 12 via NX853

Path Desc	Waypoint Identifier	Fly-over	Course °M(°T)	Dist (NM)	Turn Dir	Altitude	Speed	VPA/RDH	Rec Navaid	Navigation Specification
IF	NX853	-	-	-	-	+3700	-	-	-	RNP APCH
TF	NX854	-	210°(217.9°)	5.0	-	+3700	-210	-	-	RNP APCH

Path Desc	Waypoint Identifier	Fly-over	Course °M(°T)	Dist (NM)	Turn Dir	Altitude	Speed	VPA/RDH	Rec Navaid	Navigation Specification
IF	NX854	-	-	-	-	+3700	-	-	-	RNP APCH
TF	NX855	-	120°(127.8)	5.0	-	@3700	-	-	-	RNP APCH
TF	RW12	Y	120°(128.0)	7.6	-	@1292	-	-3.00/50	-	RNP APCH
TF	NEXOV	Y	120°(128.2)	9.0	-	-	-	-	-	RNP APCH

## Holding NEXOV

Path Desc	Waypoint Identifier	Fly-over	Course °M(°T)	Dist (NM)	Turn Dir	Altitude	Speed	VPA/RDH	Rec Navaid	Navigation Specification
HM	NEXOV	Y	300°(308.0°)	-	R	+3200	-210	-	-	RNP 1

## FAS Data Block

## RNP RWY 12

## Input data

Operation Type	0
SBAS Provider	1 (EGNOS)
Airport Identifier	ESNX
Runway	12
Runway Letter	0 (None)
Approach Performance Designator	0
Route Indicator	
Reference Path Data Selector	0
Reference Path Identifier	E12A
LTP/FTP Latitude	653554.8010N
LTP/FTP Longitude	0191522.2190E
LTP/FTP Ellipsoidal Height (metres)	406.5
FPAP Latitude	653459.1990N
Delta FPAP Latitude (seconds)	-55.6020
FPAP Longitude	0191812.9195E
Delta FPAP Longitude (seconds)	170.7005
Threshold Crossing Height	50.0
TCH Units Selector	0 (feet)
Glidepath Angle (degrees)	3.00
Course Width (metres)	105.00
Length Offset (metres)	288
HAL (metres)	40.0
VAL (metres)	50.0

## Output data

Data Block	10 18 OE 13 05 0C 00 00 01 32 31 05 62 DF 26 1C D6 8B 43 08 E1 23 9C 4D FE 99 35 05 F4 01 2C 01 64 24 C8 FA 70 98 8C E7
Calculated CRC Value	70988CE7

## Required Additional Data

ICAO Code	ES
LTP/FTP Orthometric Height (metres)	378.6